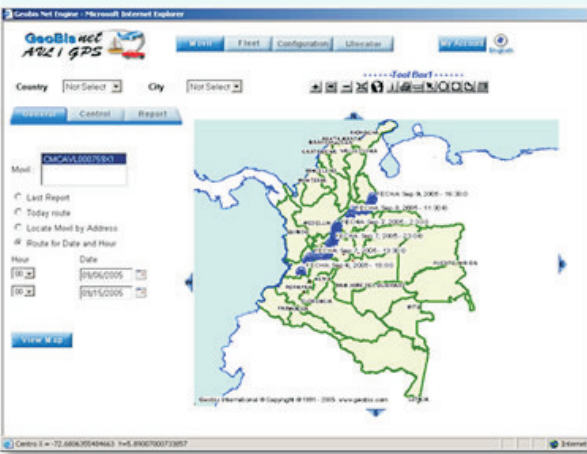


AUTOMATIC VEHICLES LOCATION VIA THE WEB : INTERNET & INTRANETS



Geobis.net AVL / GPS 3.6 is a multinational solution to track mobiles or vehicles using the Internet in any country or city around the world.

It allows you to see each unit or mobile directly in a real geographic location, directly on to full color digital maps including complete reports about time, speed and itinerary.

System Options :

- ❑ Password and user name required to log into the system.
- ❑ Online reports for fleets from single mobile to any number of vehicles or companies.
- ❑ Monthly reports on employee use of the system.
- ❑ Annual corporate subscription with cost depending on number of subscribed vehicles and mobiles.
- ❑ Online reports sent to email including maps and alphanumeric information.
- ❑ Available in Spanish, English and Portuguese.

Possibilities :

- ❑ Corporate web-based solutions for Internet and Intranets, also available for client server architectures.
- ❑ Standard open Interface to different vertical and horizontal architectures, working under operating systems like Unix, Linux, Win 2000 and others in the market (Java Development).
- ❑ Oracle, SQL, Informix and other common databases can be used for mobile administration.
- ❑ Totally compatible with GPS AVL units from different manufacturers.

Characteristics:

- ❑ Easy to implement and configure.
- ❑ Stores, visualizes and reports vehicle or mobile movements from one car to a complete fleet.
- ❑ Available for group and subgroup operations and vehicle sets from different companies.
- ❑ Simultaneous control in different countries or cities around the world.
- ❑ Stores and handles different information strands for cellular or satellite based AVL GPS units.
- ❑ Different technical support options.

Minimal requirements for Geobis Net AVL & VMS / GPS :

- ❑ Each user should have a computer with Internet access and a web explorer software .
- ❑ Main platform : see detailed info for web servers and channels required.

