

PERSONAL TRACKING AVL GPS SYSTEM

Geobis GPS system :

With your personal computer and GPS Unit track your location in real time or in post process directly on digital dynamic maps.

Digital Intelligent Maps TM - MDITM available from National Overview level up to city and main most important towns around the world.

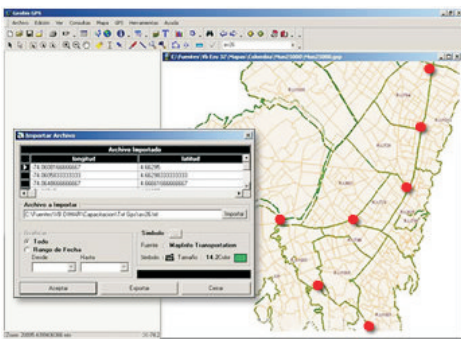


System Options :

- ❑ Functions directly with English and or Spanish interface environment to navigate with digital maps (Geobis, Mapinfo or Esri format).
- ❑ Easy to configure and install to work in to the field, office, including options to record GPS tracks.
- ❑ Allows to work in real time or in post process for any measure or track from Garmin GPS units.
- ❑ Professional reports with different tracks developed with GPS units.
- ❑ Available in English and Spanish.
- ❑ Full compatibility with Garmin Etrex Family GPS Units : Geko, Etrex Vista, Camo, Rino, GPS MAP, others.
- ❑ Customization of new develops according with requests.
- ❑ Different options and alternatives to be used with other GPS units available, please call.

Characteristics :

- ❑ Easy to use and report tracks over any developed or acquire digital map.
- ❑ Allows you to create and verify digital cartography directly into the field or post process office work.
- ❑ Totally compatible with digital files formats as : Geobis, Mapinfo (Mif, Tab), Esri (Shp). Digital maps will be ready to work in to the field in WGS84 projection.
- ❑ Optional modules available : National and local address geocoders, others.
- ❑ GPS Units not included, required as additional accessory.
- ❑ Options available also in Intranet, Internet and or Client Server platforms.



Minimal requirements of Geobis GPS:

- ❑ Procesador Pentium II, 500 Mhz, 256 Ram Monitor color 8"
- ❑ Windows 95 or newer. Compatibility con 100% con Windows XP, 2000 Server, NT.